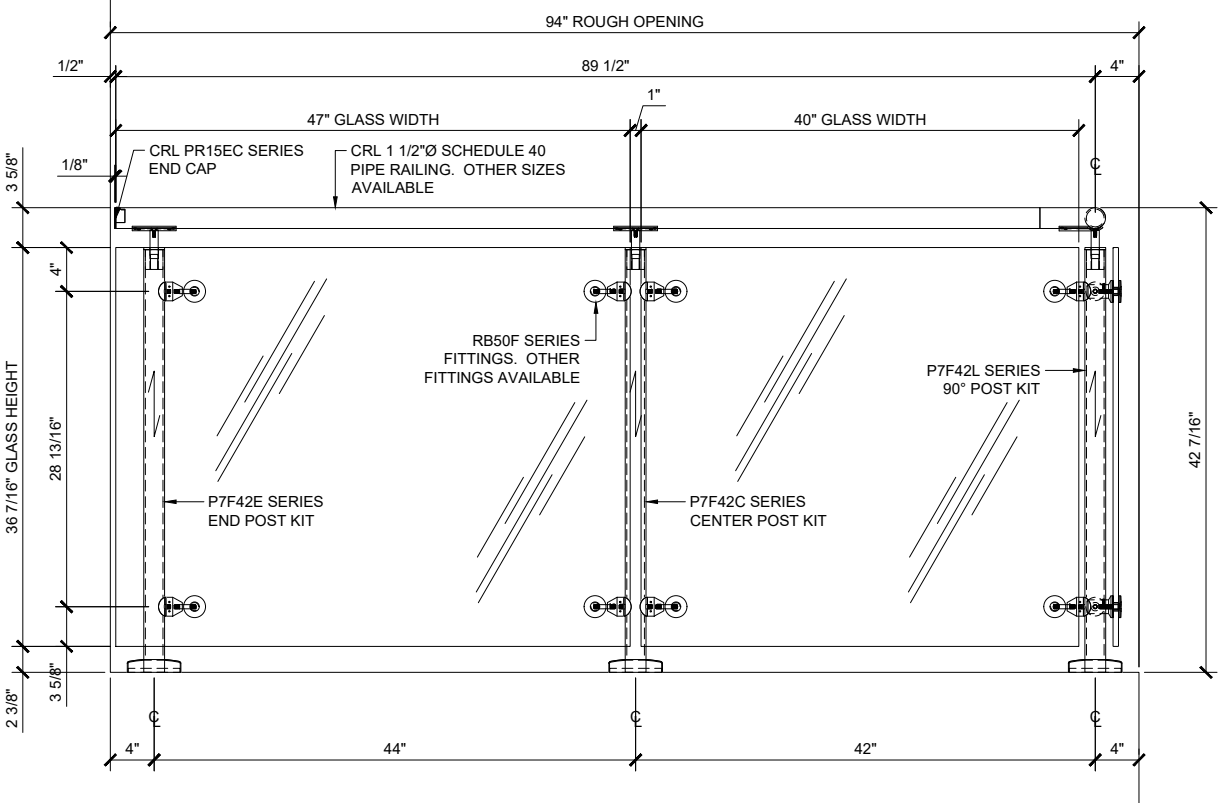
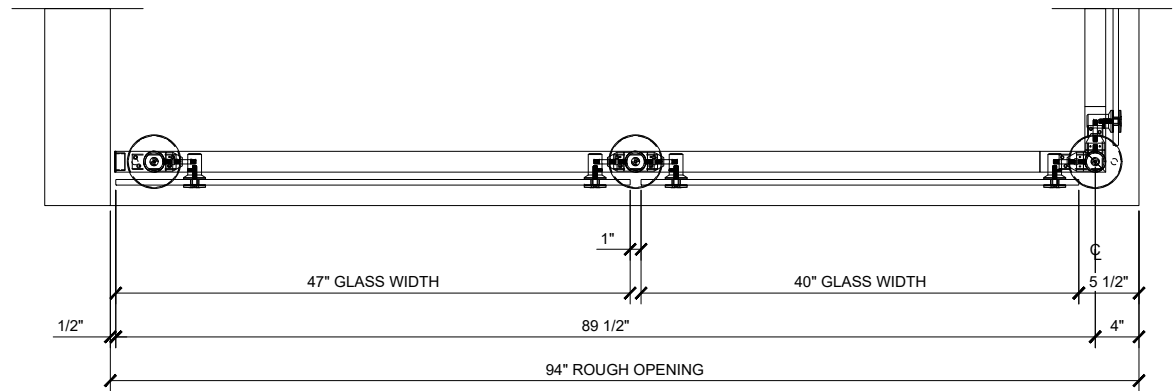


CRL P7 SERIES POST RAILING SYSTEM

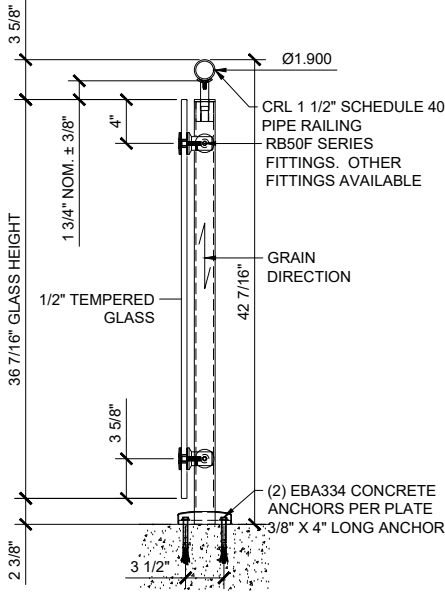
- * DESIGNED TO ACCEPT 1/2" TO 27/32" TEMPERED GLASS
- * TOP SADDLE SUPPORTS 1 1/4"Ø (1.66" O.D.) & 1 1/2"Ø (1.90" O.D.) SCHEDULE 40 PIPE RAILING AND 1 1/2"Ø O.D. TUBE RAILING
- * 36" AND 42" STANDARD POST HEIGHTS WITH CUSTOM HEIGHTS AVAILABLE
- * TWO STANDARD STAINLESS STEEL FINISHES BRUSHED OR POLISHED WITH CUSTOM POWDER PAINT FINISHES ALSO AVAILABLE
- * VERTICALLY ADJUSTABLE TOP SADDLE



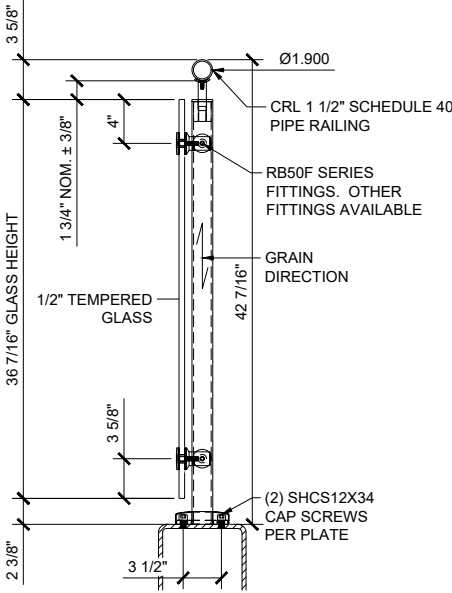
TYPICAL ELEVATION
1 1/2"=1'-0"



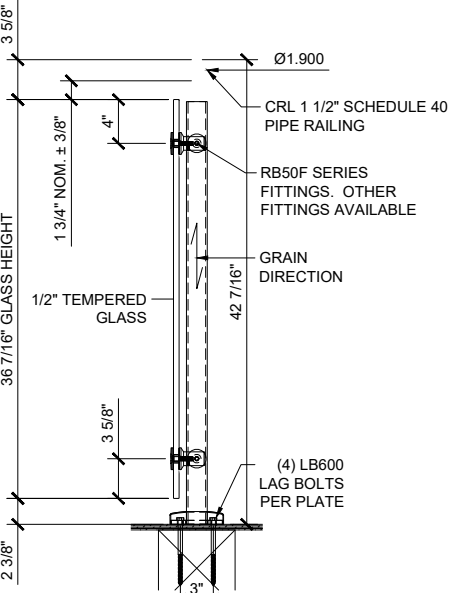
TYPICAL PLAN VIEW
1 1/2"=1'-0"



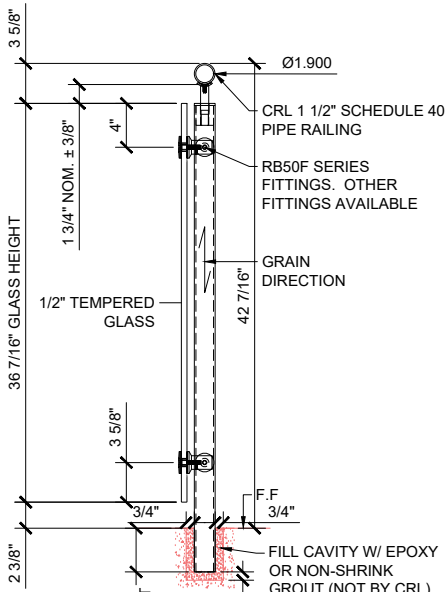
CONCRETE MOUNT
1 1/2"=1'-0"



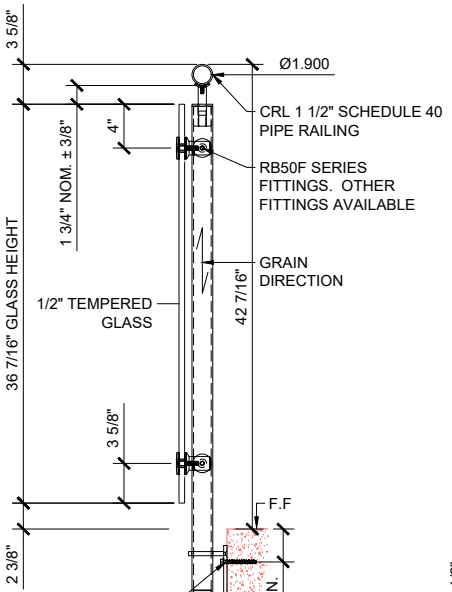
STEEL MOUNT
1 1/2"=1'-0"



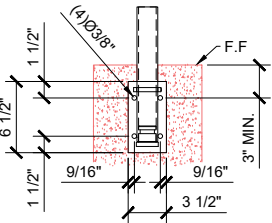
WOOD MOUNT
1 1/2"=1'-0"



CORE MOUNT
1 1/2"=1'-0"



FASCIA MOUNT
1 1/2"=1'-0"



Revisions By:

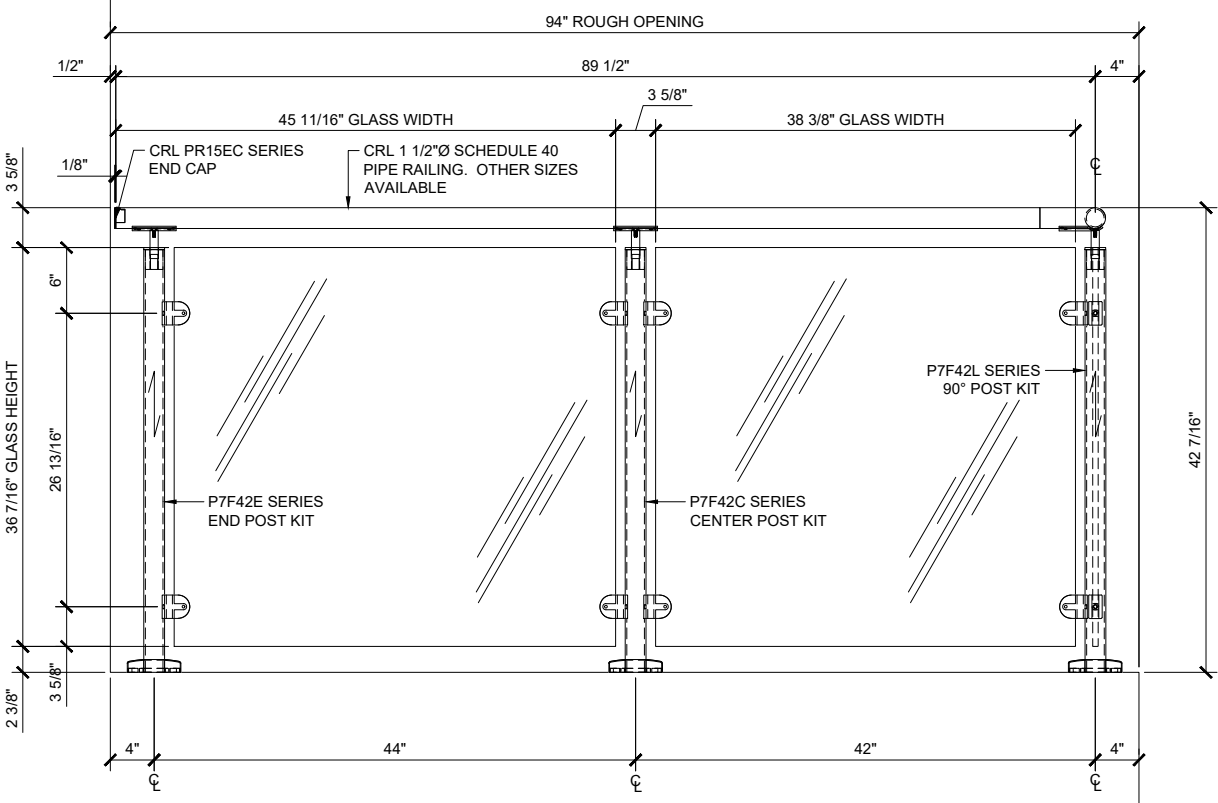
CRL
ALUMINUM
C.R. LAURENCE CO. ARCHITECTURAL PRODUCTS
2503 E. Vernon Avenue, Los Angeles, CA 90058-1897
PH: (800) 421-6144 FAX: (800) 587-7501 www.crlaurence.com

Description:
CRL P7 & P7Z SERIES
POST RAILING SYSTEMS
SYS0071G

Drawn By: SDH
Date: 03/08/2017
Scale: AS NOTED
File Name: SYS0071G P7-Series Stainless Steel Post Railing System
Sheet

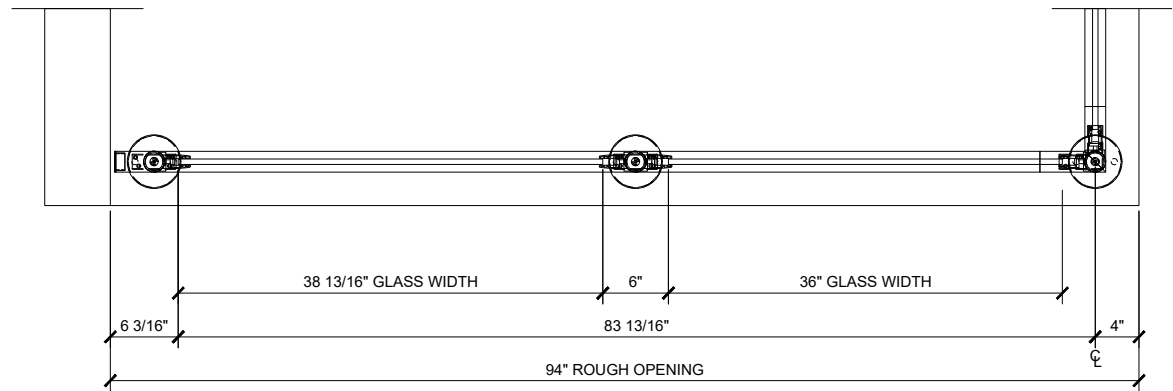
CRL Z-SERIES ROUND POST RAILING SYSTEM

- * DESIGNED TO ACCEPT 1/2" TO 9/16" TEMPERED GLASS
- * TOP SADDLE SUPPORTS 1 1/4"Ø (1.66" O.D.) & 1 1/2"Ø (1.90" O.D.) SCHEDULE 40 PIPE RAILING AND 1 1/2"Ø O.D. TUBE RAILING
- * 36" AND 42" STANDARD POST HEIGHTS WITH CUSTOM HEIGHTS AVAILABLE
- * TWO STANDARD STAINLESS STEEL FINISHES BRUSHED OR POLISHED WITH CUSTOM POWDER PAINT FINISHES ALSO AVAILABLE
- * VERTICALLY ADJUSTABLE TOP SADDLE



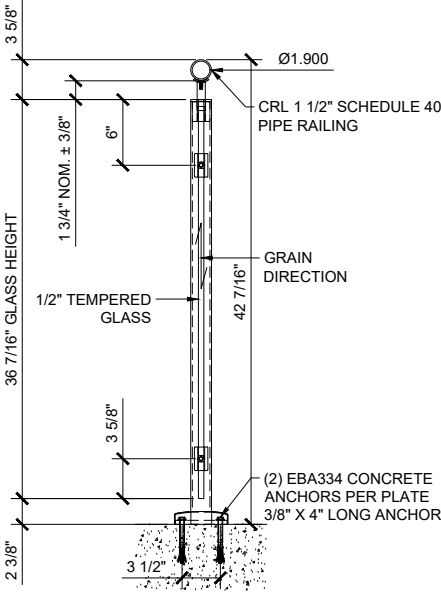
TYPICAL ELEVATION

SCALE: 1 1/2"=1'-0"



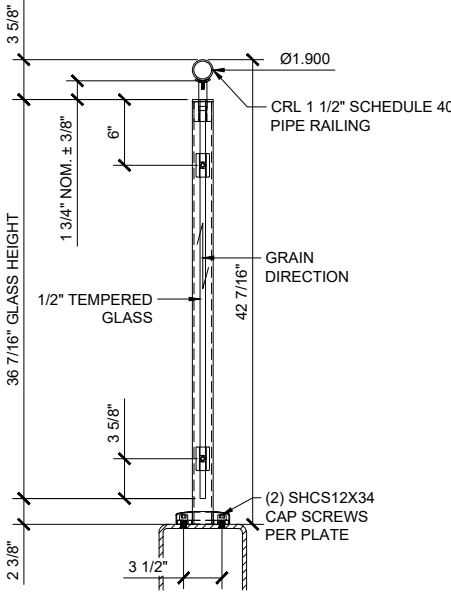
TYPICAL PLAN VIEW

SCALE: 1 1/2"=1'-0"



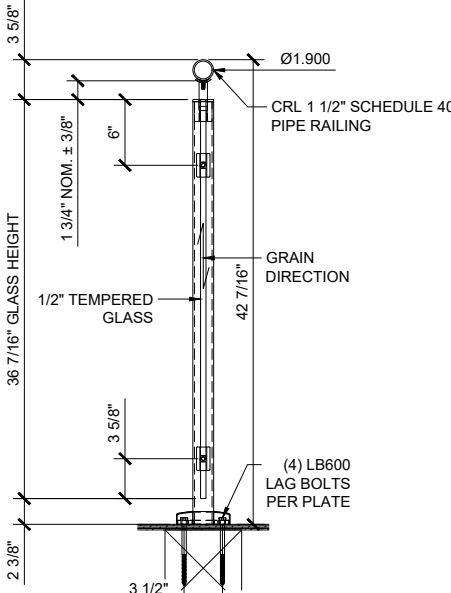
CONCRETE MOUNT

1 1/2"=1'-0"



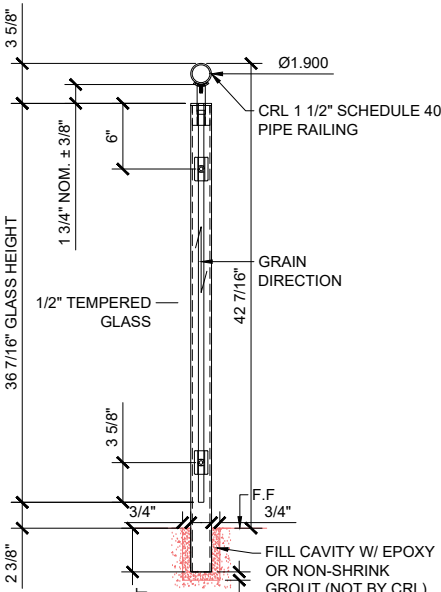
STEEL MOUNT

1 1/2"=1'-0"



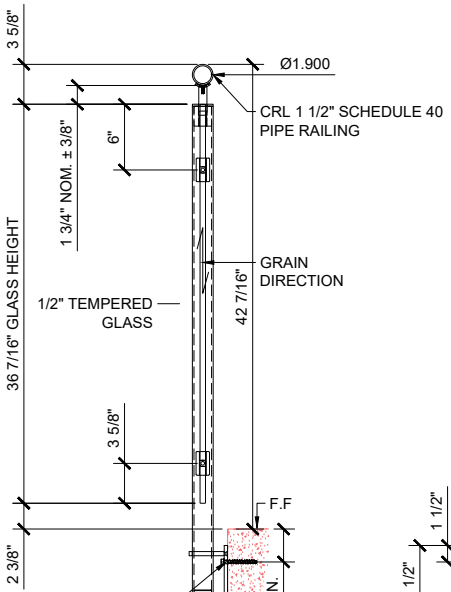
WOOD MOUNT

1 1/2"=1'-0"



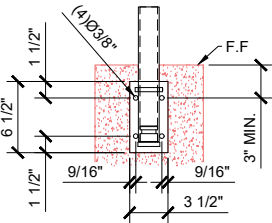
CORE MOUNT

1 1/2"=1'-0"



FASCIA MOUNT

1 1/2"=1'-0"

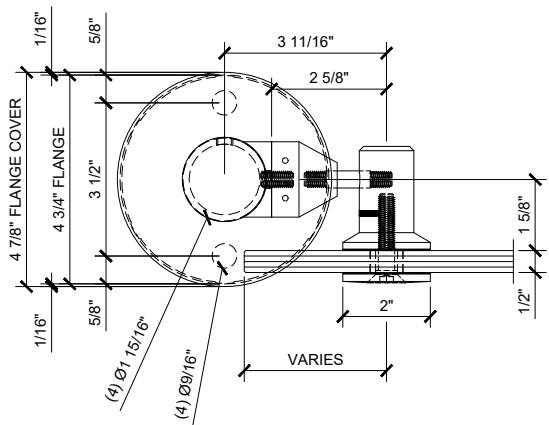


Revisions By:

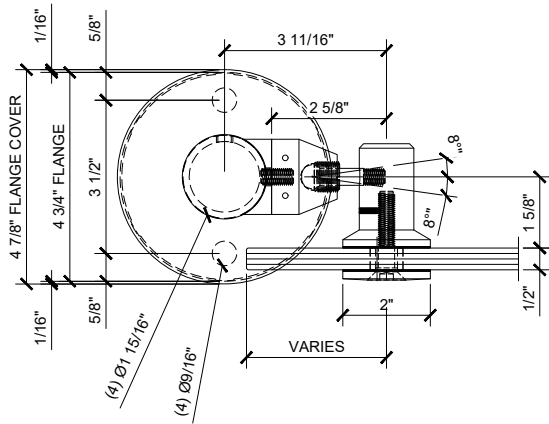


Description:
CRL P7 & P7Z SERIES
POST RAILING SYSTEMS
SYS0071G

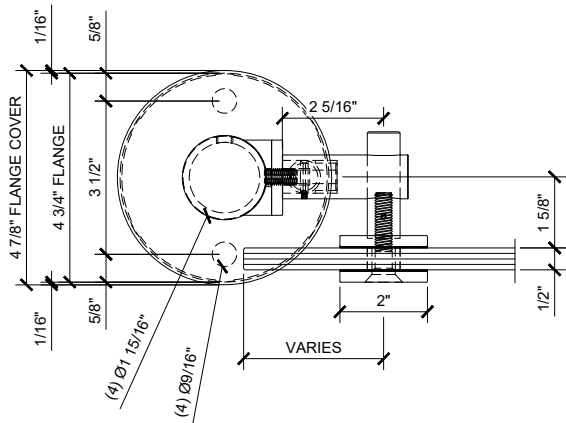
Drawn By: SDH
Date: 03/08/2017
Scale: AS NOTED
File Name: SYS0071G P7-Series Stainless Steel Post Railing System
Sheet



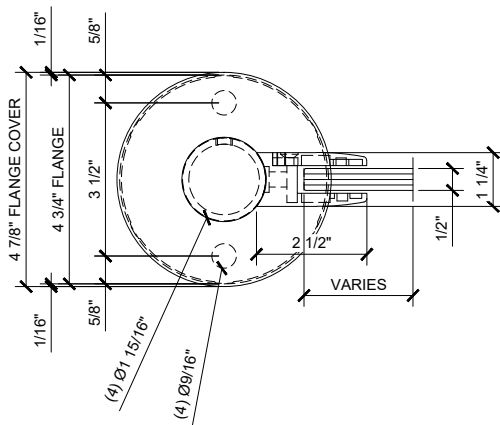
RB50F FIXED FITTING / FLANGE
SCALE: 1'-0"=1'-0"



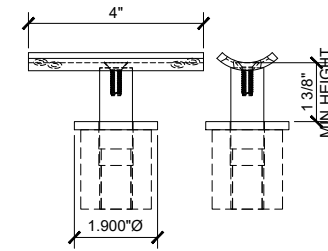
RB50F SWIVEL FITTING / FLANGE
SCALE: 1'-0"=1'-0"



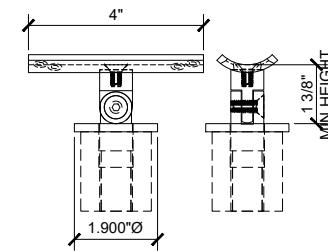
RB51F FIXED FITTING / FLANGE
SCALE: 1'-0"=1'-0"



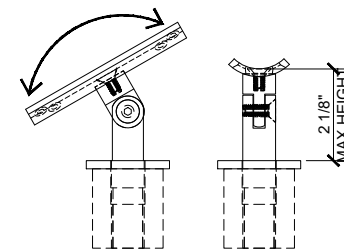
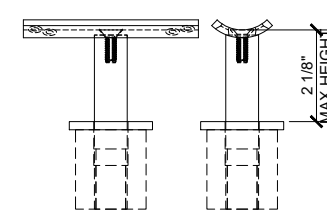
RB50F FIXED FITTING / FLANGE
SCALE: 1'-0"=1'-0"



P7VF W/ PRS1
STANDARD VERTICAL ADJ
STANDOFF SADDLE
6"=1'-0"



P7VS W/ PRS1
STANDARD VERTICAL ADJ
STANDOFF SADDLE
6"=1'-0"



CRL P7VS - ADJUSTABLE ANGLE
OPTION AVAILABLE
FOR RAMP AND STAIRS

Revisions By:

CRL ALUMINUM
C.R. LAURENCE CO. ARCHITECTURAL PRODUCTS
2503 E. Vernon Avenue, Los Angeles, CA 90058-1897
PH: (800) 421-6144 FAX: (800) 587-7501 www.crlaurence.com

Description:
CRL P7 & P7Z SERIES
POST RAILING SYSTEMS
SYS0071G

Drawn By: SDH
Date: 03/08/2017
Scale: AS NOTED
File Name:
SYS0071G P7-Series Stainless Steel Post Railing System
Sheet

2.01