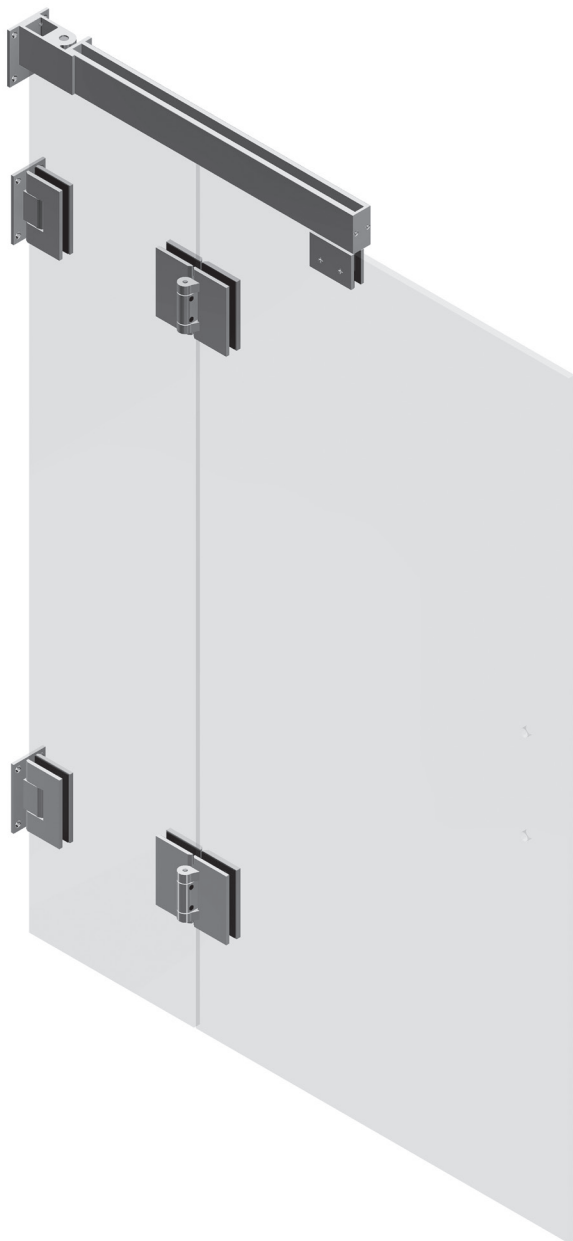


# INSTALLATION INSTRUCTIONS

## CLEAR SPACE ELLIPTICAL SHOWER DOOR SYSTEM



Go to <https://www.youtube.com/embed/dtsofKmBhYM>  
to Play Operation Video  
NOTE: Glass not included.



2503 E. Vernon Avenue, Los Angeles, CA 90058-1826  
(800) 421-6144 Fax (800) 262-3299  
[crlaurence.com](http://crlaurence.com)

PARTS LIST

<div><p><b>CLSK1L_</b></p><p>Kit Contains:</p><ul style="list-style-type: none"><li>1 Top Guide</li><li>2 Wall Mount Hinges</li><li>2 180° Glass-to-Glass Hinges</li><li>1 Left Handed Control Arm</li></ul><p>NOTE: Glass Panels Not Included.</p><p>EXTERIOR</p><p>Clear Space Complete Left Hand Swinging Kit</p></div>		<div><p><b>CLSK1R_</b></p><p>Kit Contains:</p><ul style="list-style-type: none"><li>1 Top Guide</li><li>2 Wall Mount Hinges</li><li>2 180° Glass-to-Glass Hinges</li><li>1 Right Handed Control Arm</li></ul><p>NOTE: Glass Panels Not Included.</p><p>EXTERIOR</p><p>Clear Space Complete Right Hand Swinging Kit</p></div>	
<div><p><b>CLS02L_</b></p><p>Clear Space Replacement Left Hand Control Arm</p></div>		<div><p><b>CLS02R_</b></p><p>Clear Space Replacement Right Hand Control Arm</p></div>	
<div><p><b>CLS337_</b></p><p>Clear Space Replacement Wall Mount Hinge</p></div>	<div><p><b>CLS181_</b></p><p>Clear Space Replacement 180° Glass-to-Glass Hinge</p></div>	<div><p><b>CLS01_</b></p><p>Clear Space Replacement Top Guide</p></div>	

NOTE: CLSK1L\_ installation drawings shown in this manual. Other installations similar.

ORDER OF ASSEMBLY AND INSTALLATION

PARTS LIST .....	2
SPECIFICATIONS .....	3
GLASS FABRICATION .....	4
DOOR ASSEMBLY .....	5
Install Top Guide .....	5
FOLDING PANEL ASSEMBLY .....	6
Install Wall and Glass-to-Glass Hinges .....	6
FOLDING PANEL INSTALLATION .....	7
DOOR INSTALLATION .....	7
CONTROL ARM INSTALLATION .....	8

IMPORTANT: READ THIS MANUAL THOROUGHLY BEFORE BEGINNING INSTALLATION.

SPECIFICATIONS

MAXIMUM DOOR SIZE:

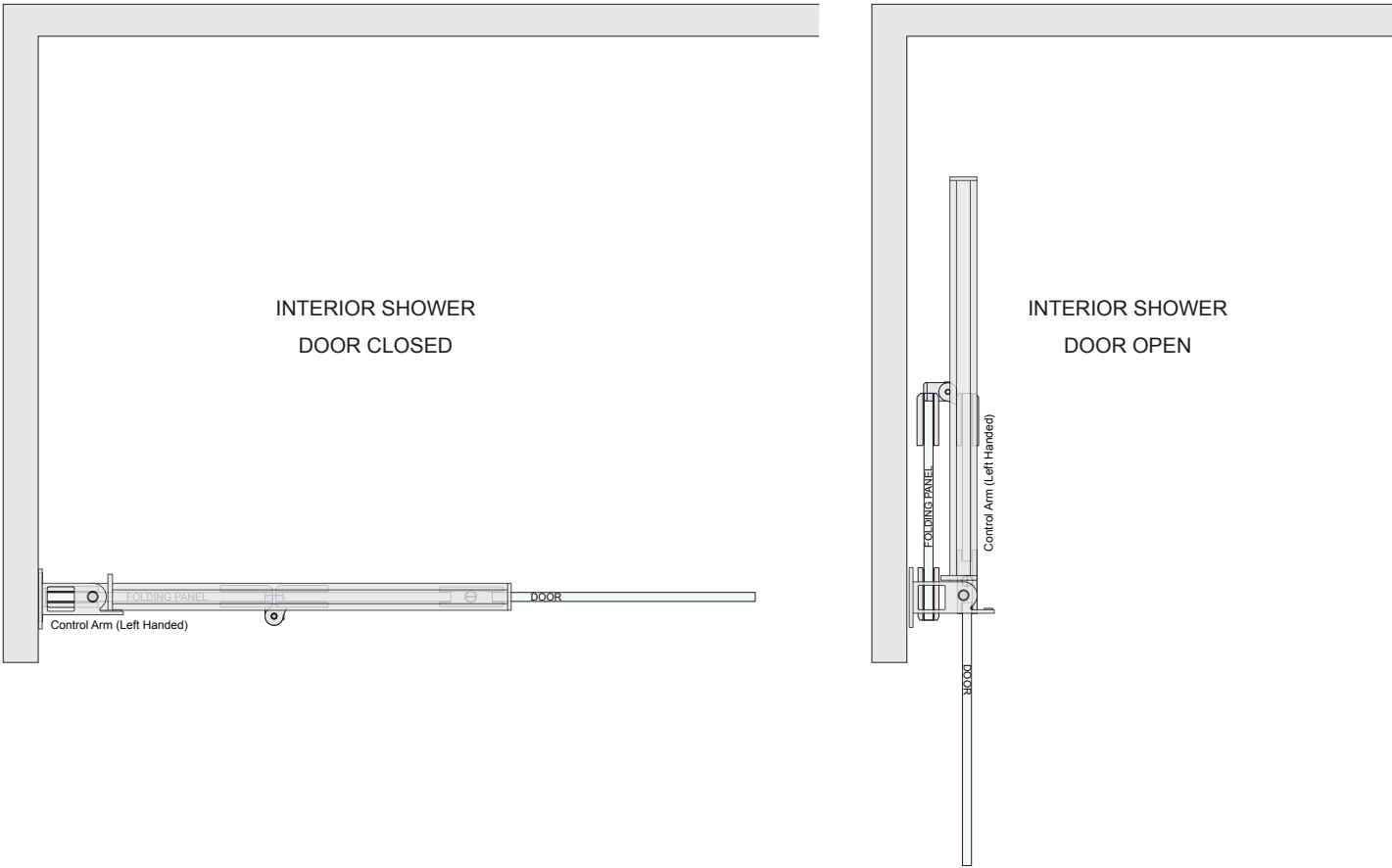
Using two hinges: 36" (914 mm) Wide and 110 lbs (50 kg)

Using three hinges: 36" (914 mm) wide and 140 lbs (63 kg)

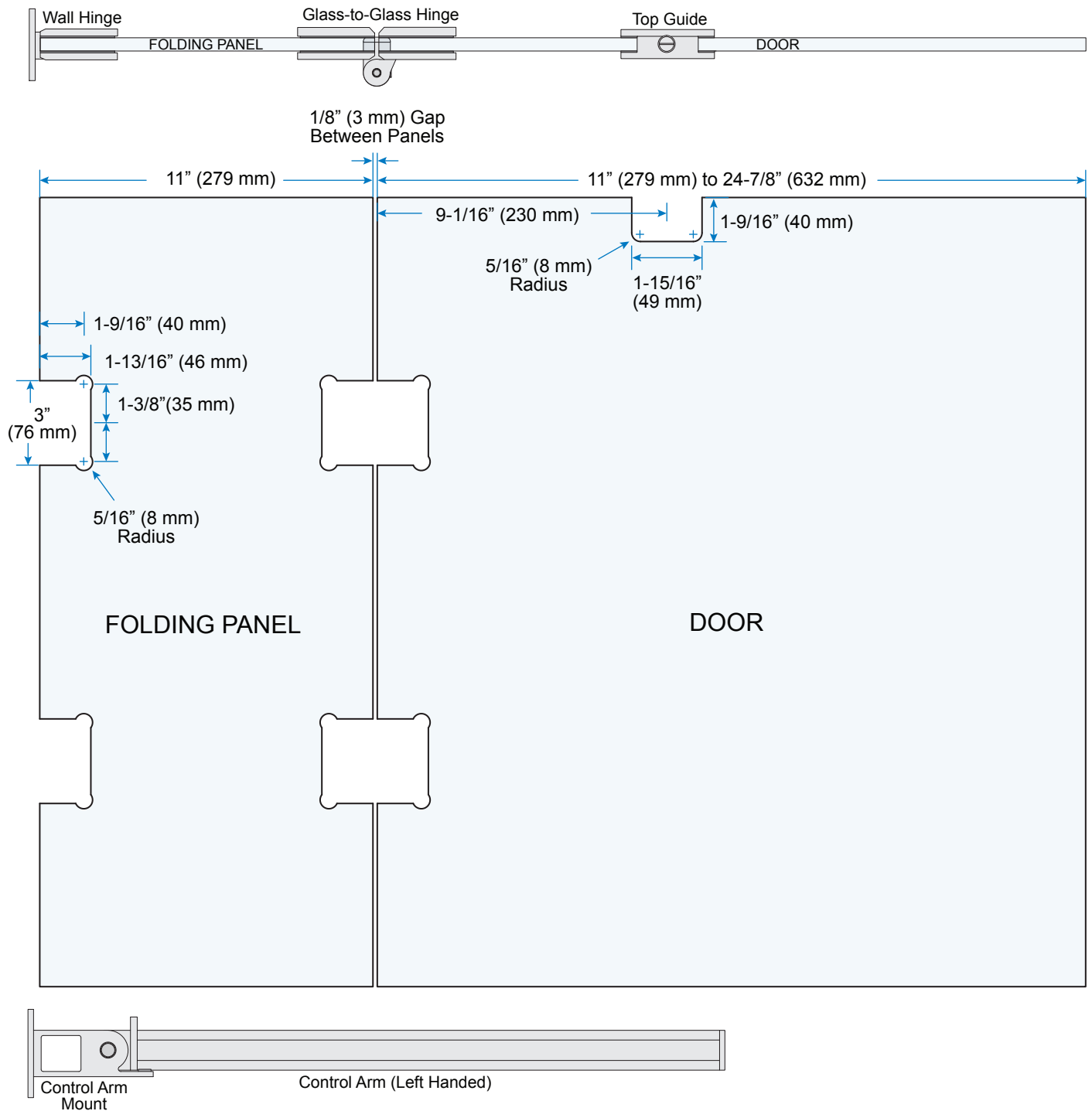
Do Not Exceed Either Width or Weight.

NOTE: For enclosures requiring three Wall Mount and three 180° Glass-to-Glass Hinges, those third hinges must be purchased separately. Two sets of hinges are included in the kit.

GLASS THICKNESS: 3/8" or 1/2" (10 or 12 mm)



## GLASS FABRICATION

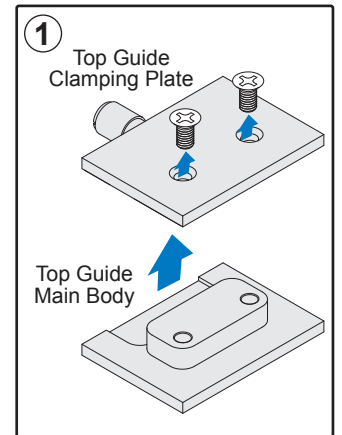
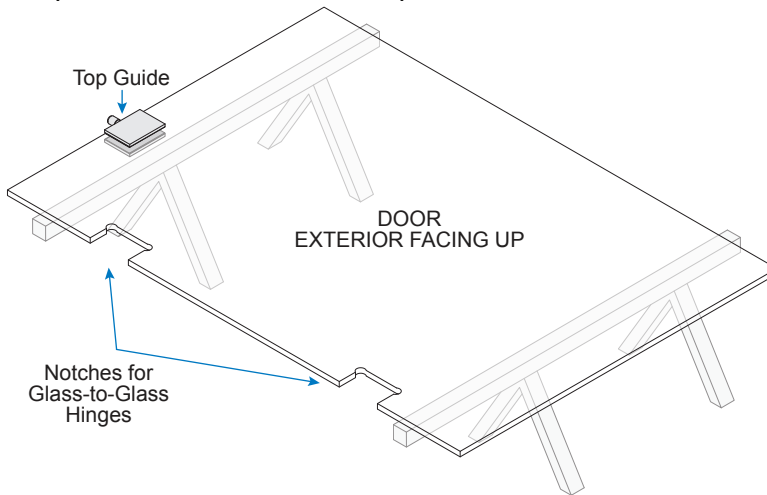
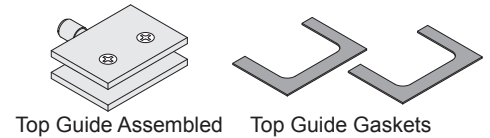


NOTE: For use with 3/8" or 1/2" (10 or 12 mm) Tempered Glass only. Do Not use Laminated Glass.

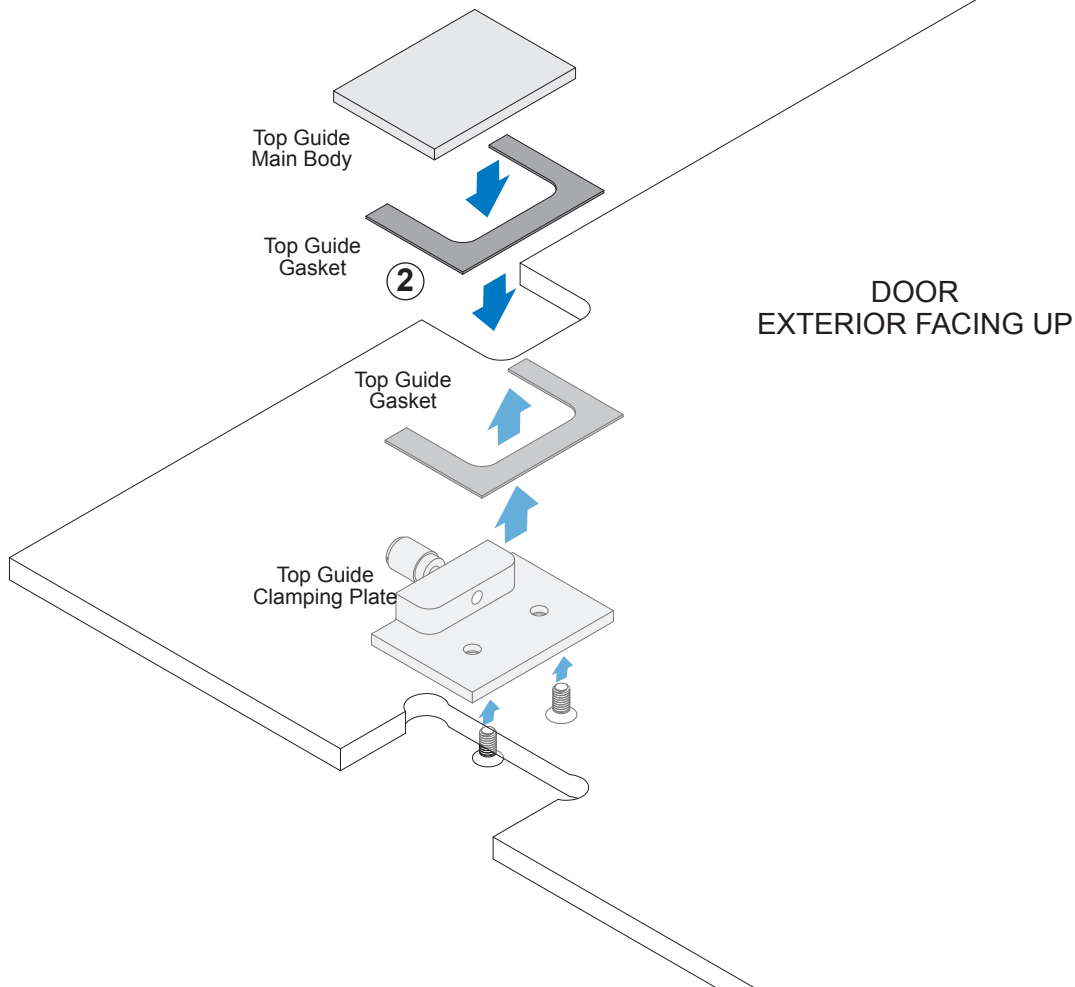
## DOOR ASSEMBLY

### Install Top Guide

- ① Unpack Top Guide and remove Clamping Plate.
- ② Install Top Guide with Gaskets at top Door notch.



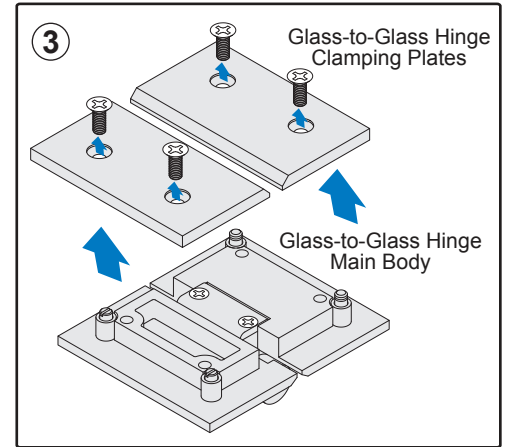
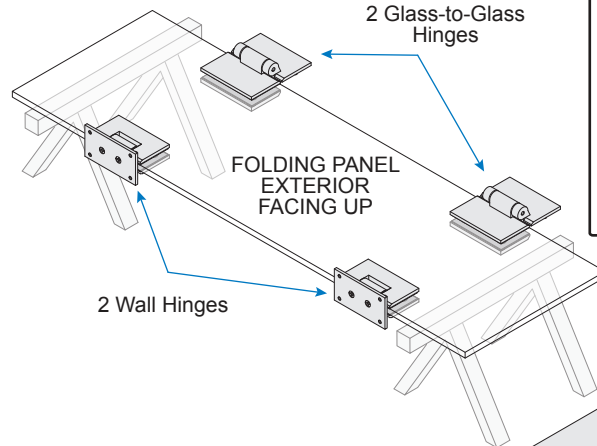
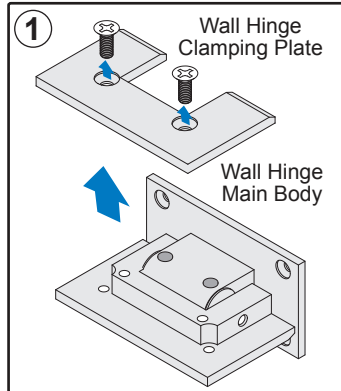
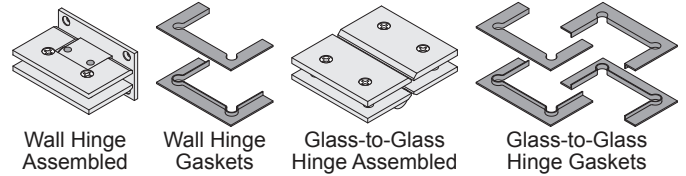
NOTE: Top Guide is installed with Clamping Plate on interior of Door. Glass-to-Glass Door Hinges are installed with Clamping Plates on interior during installation on Page 7.



# FOLDING PANEL ASSEMBLY

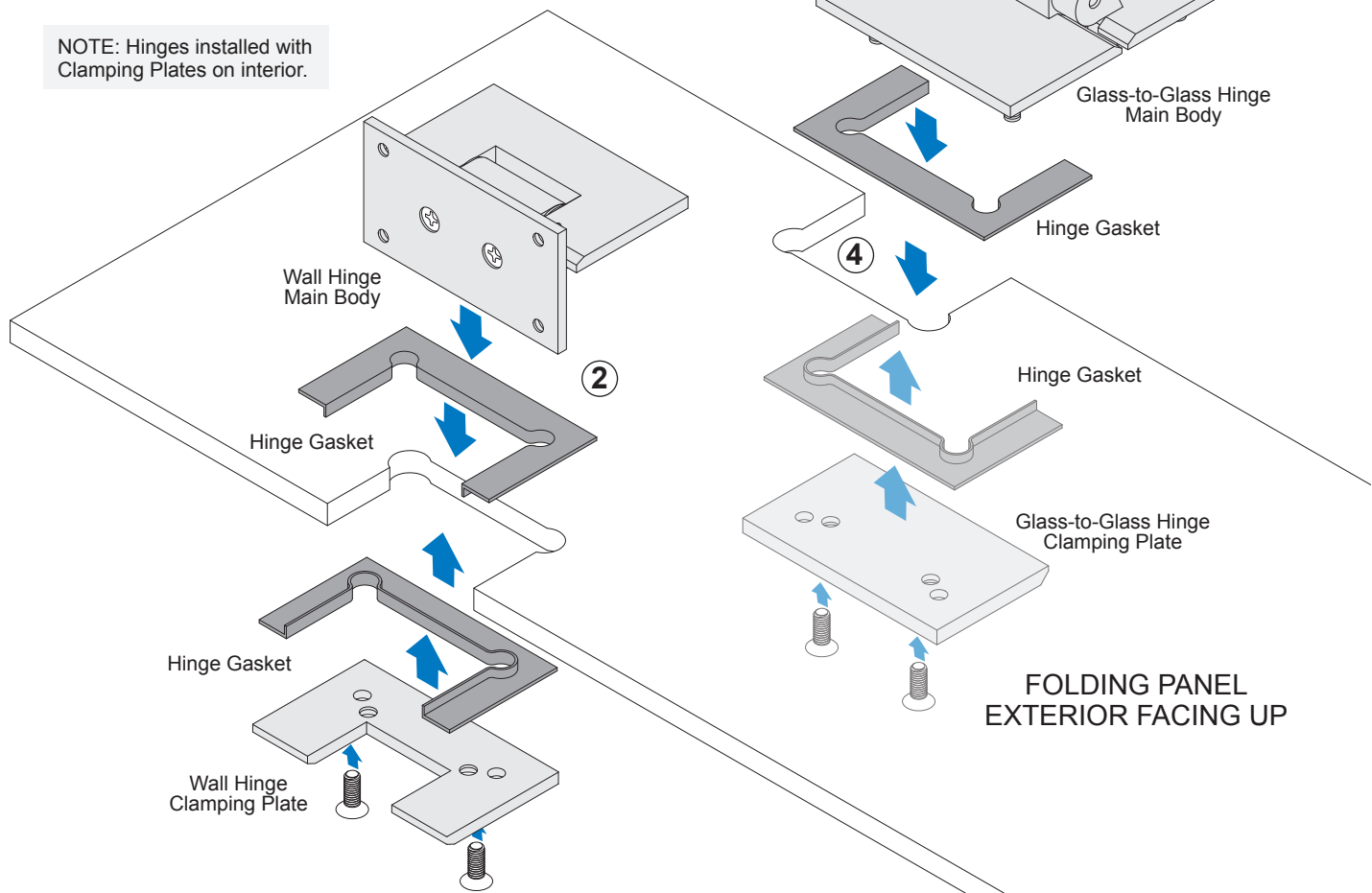
## Install Wall and Glass-to-Glass Hinges

- ① Unpack Wall Hinges and remove Clamping Plates.
- ② Fit Hinges into notches on side of Folding Panel. Reassemble with included Gaskets.
- ③ Unpack Glass-to-Glass Hinges and remove Clamping Plates.
- ④ Fit Hinges into notches on other side of Folding Panel. Reassemble one side with included Gaskets.



NOTE: Glass-to-Glass Hinge Clamping Plate and Gaskets installed on Folding Panel only.

NOTE: Hinges installed with Clamping Plates on interior.

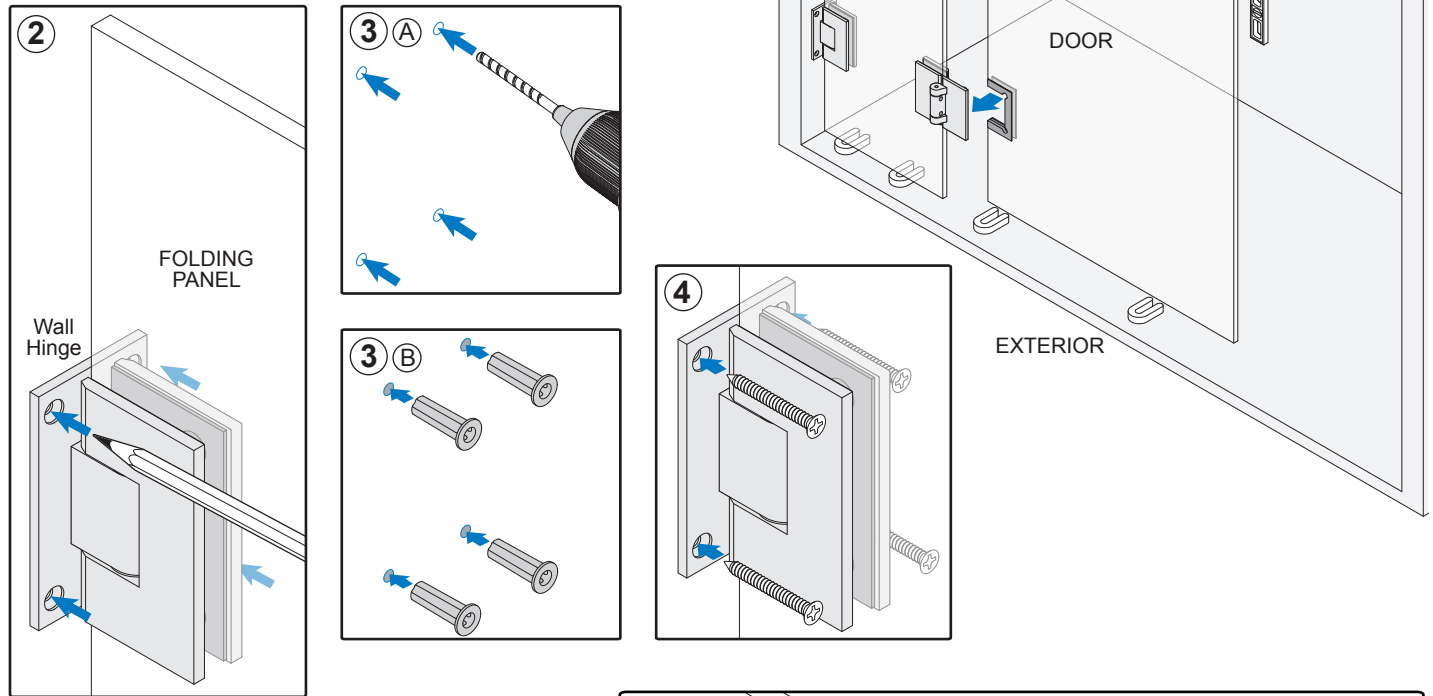


## FOLDING PANEL INSTALLATION

- ① Set Folding Panel with Wall Hinge against wall. Rest on shims and ensure it is level and plumb.

NOTE: Wall Hinges fold Panel into shower.

- ② Mark holes in Wall Hinge.
- ③ Remove Panel to drill holes and install anchors.
- ④ Secure using #10 fasteners suitable for substrate.

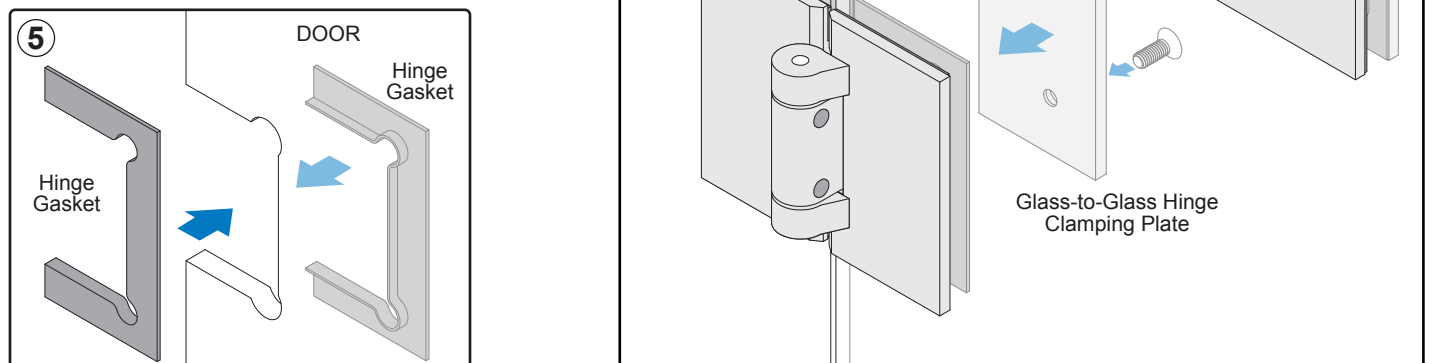


## DOOR INSTALLATION

- ⑤ Install Glass-to-Glass Hinge Gaskets on exterior and interior Door at each notch.
- ⑥ Place Door next to Folding Panel. Align notches to Hinges. Rest Door on shims. Level and plumb.

NOTE: Glass-to-Glass Hinges fold Door into Folding Panel on outside of shower.

- ⑦ Install Clamping Plates on interior.

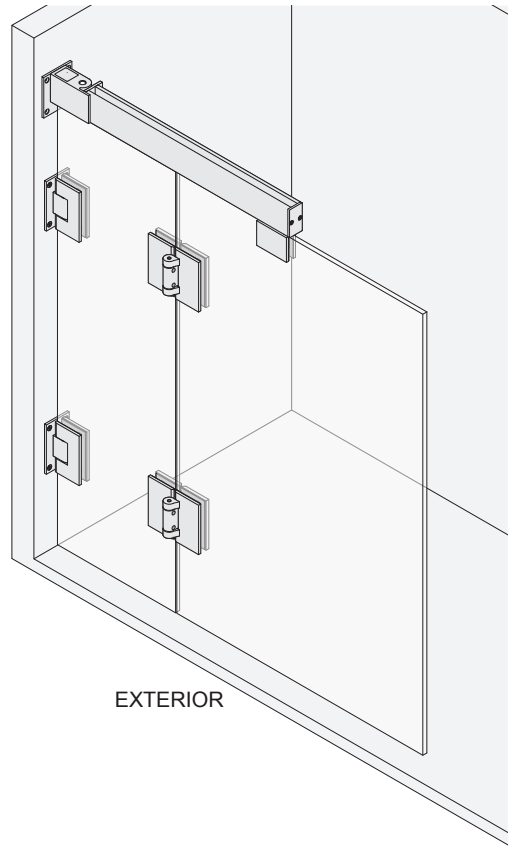


# CONTROL ARM INSTALLATION

- ① Position Control Arm above Panels. Top Guide on Door sits inside channel in Control Arm.

NOTE: Control Arm folds into shower.

- ② Mark holes in Control Arm Base.
- ③ Remove Control Arm to drill holes and install anchors.
- ④ Secure using #10 fasteners suitable for substrate.



EXTERIOR

